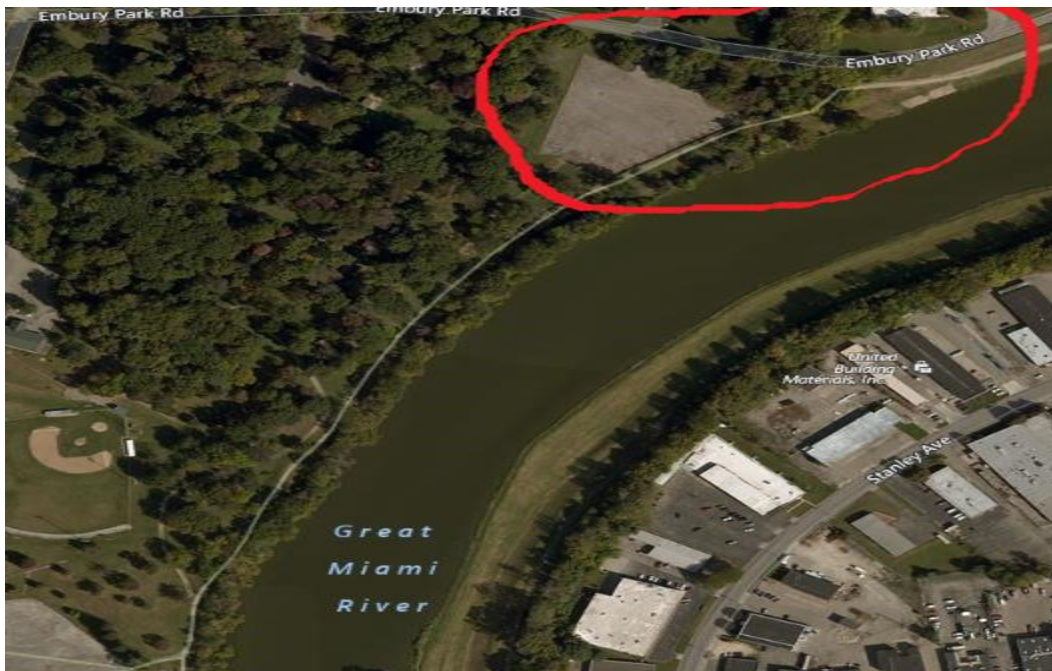


GDRA 2017 Relocation Plan

As you know, the Helena Street bridge has been closed to traffic for a few weeks. It is also now closed to rowing due to debris in the river. Thus, through the end of the 2016 season, we are rowing off our wooden docks that have been placed across the street in Island Park. Since that can be a pain carrying boats/equipment across the street into the park, and because Five Rivers Metroparks has certain restrictions on our rowing there, we have a MUCH better solution for 2017! Effective spring 2017 and through the end of fall 2017, GDRA will be relocating to new quarters in Triangle Park just upstream and across the river from our current home:



While we would obviously prefer not to have to move, even temporarily, the Triangle Park facility will allow us to continue full, uninterrupted operations throughout 2017. We will have full use of the river north of Helena Street, including the full 2k course and the turnaround zones both above and below it. It will actually be a nice change of pace in some ways, because our docks will now be up on the course in the heat of the action so folks can get a great view of the river, practice, and all of the other shenanigans that usually occur out of sight!

As you can imagine, it is quite a job to move the club even a few hundred meters up the river. We will have docks, boat racks/storage for club and private boats, storage containers for all of our oars and other equipment, a very large fence around everything, a restroom, and plenty of parking. While our goal will be to make it as close to home as possible, there will certainly be some things that cannot be duplicated. What will absolutely be duplicated, however, is the most important part of what we do – row on and enjoy full use of our wonderful stretch of river until we are back home at the boathouse in 2018!

Thanks to all involved in planning for our relocation, and we will keep everyone advised as our plans move forward over the winter. If you have any questions in the meantime, please contact Wilfred, the GDRA President, at wgvanbreukelen@hotmail.com. Row Dayton!

Your Board of Trustees